

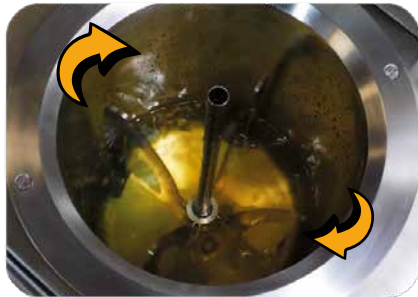
MEDIA PREPARATOR

Prepare up to 30L of media

MEDIAWEL 30[®]



Safety lid
Locked above 80°C



Large stirrer
From liquid to viscous media



e-TRACE[®] technology



Easy to move
Large medical wheels



Multicolored visual alarm

7" LCD touchscreen
Gloves friendly

Antishock body
ABS PC PLASTIC



Easy cleaning
Trapdoor to access the vessel

PERFORMANCES



From 2.5 to 30 liters



60 - 90 min



25-125 °C / ± 0.5 °C

Delivered with the MEDIAWEL 30 : User Manual, Control certificate, Large magnetic stirrer (MEDW2008), Sampling tube (MEDW2009), Draining plug (MEDW2010), Sampling nozzle seals x2 (MEDW4011), Sampling nozzles x2 (MEDW2003 : Ø 12mm + MEDW2004: Ø 6.4mm), Inlet and outlet water tubing (4 m) + 4 tubing clamps (MEDW4012), Decompression filters x2 (MEDW3001), Bactystopper - Calibrated sterile carded cotton x50 (MEDW3003), Sliding washer stirrer axis x2 (MEDW4003), Sampling nozzle seals x2 (MEDW4011), USB key, 3 Months free access to the Labpage "Real time data monitoring LICENCE"

TECHNICAL DATA SHEET

| | |
|---------------------------------------|--|
| Capacity | From 2.5 to 30 liters |
| Sterilization temperature | From 25 to 125°C |
| Sterilization time | From 1 to 99 min |
| Distribution temperature | From 25 to 80°C |
| Temperature accuracy | +/- 0.5°C after stabilization |
| Remaining volume | <130ml |
| Addition cap | ✓ |
| Traceability | eTRACE® Module integrated, USB data export (PDF/CSV) |
| Traceability WIFI/Ethernet (optional) | Labpage® dashboard. Real time data monitoring, data storage on SD card (up to 10 000 cycles) |
| Temperature probe | Media : 3 probes (1 standard, 1 in option and 1 for calibration) |
| Safety pressure release | Safety valve |
| Dispensing port | Adapters for tubes of 6.4 mm / 12 mm |
| Continuous homogenization | ✓ |
| Touchscreen | Tactile, LCD 7" |
| Alarm | Multicolored visual alarm |
| Cleaning | Trapdoor, easy access to the vessel |
| High mobility | Stable and easy to move : 4 large medical wheels |
| Robustness | Antishock body (ABS PC PLASTIC) |
| Vessel | Stainless steel AISI 316L |
| Programs | 50 |
| Weight | 154kg |
| Dimensions (L x l x H) | 735 x 585 x 1053 mm |
| Warranty | 1 year |
| Power supply | 400V +/- 10% - 50/60 Hz - 17A (by phase) - 9000 W or 208V +/- 10% - 50/60 Hz - 9A (by phase) - 2070 W |
| Country of origin | France - European Union |

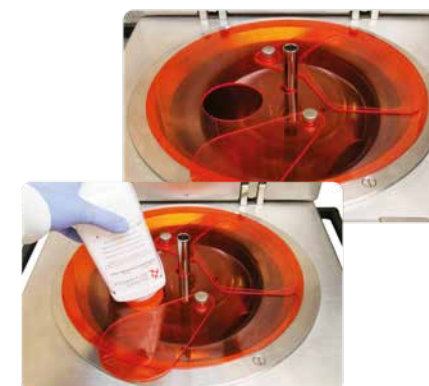
MEDIAWEL 30®

Quick water connection kit (MEDW2002) :



Quick and easy water connection from one room to another !

MEDIAWEL Dust cover (MEDW2021) :



Avoid volatile powder !