

SOL COUNT is an Automated Cell Counter of using a lens-free biosensor based a semiconductor that quickly and accurately measures or counts the total number of cells, including cells and dead cells, and easily stores and transmits data. It could also measure and count two types of cells at the same time.

SOL Cartridge is a disposable that has 4 chambers that are easier to use and more cost-effective than competitor's one.

[How to use the Device]

CAUTION: When the device is turned on, interpolation for optimal cell counting is automatically performed. When interpolation is going on, it is necessary to check out whether there are cartridges or some substances in the device before turning on the power because errors can occur during going on the interpolation if there are cartridges or some substances in the device.

SAMPLE PREPARATION

1. The cell suspension is mixed 1:1 with 0.4% trypan blue stain.
2. Mix well with a Pipette or Vortex
3. Loading 10ul of the mixture into the cartridge with a pipette (Figure 1).

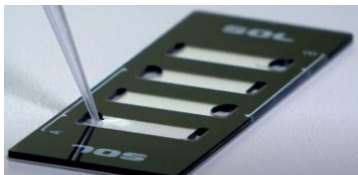


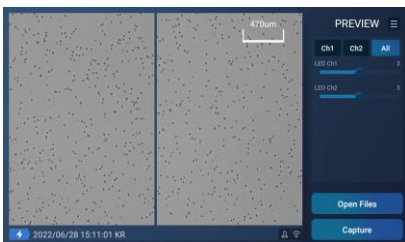
Figure 1. Loading the mixture into the Cartridge

CELL COUNTING

1. Press the Cartridge Tray in the lower center of the device to open it
2. Put the cartridge to the Cartridge Tray Mold then close it

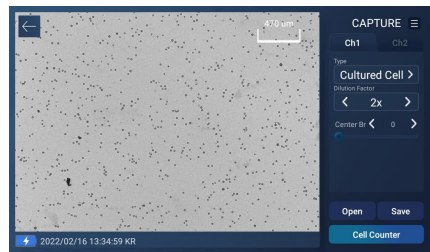


3. Click "Capture" button after checking the sample status in the "Preview"

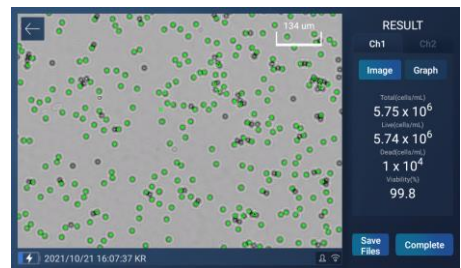


Note : SOL COUNT can get optimal results for single cell types. If there are clumped cells, we recommend cell counting after resuspension by pipetting or vortexing several times

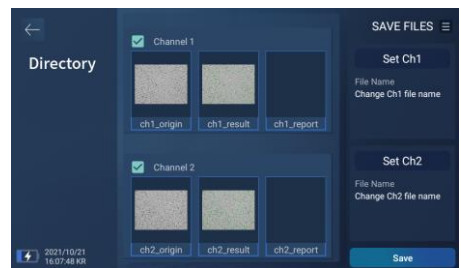
4. Click "Cell Counter" button, after checking "Type" and "Dilution Factor" of the sample in "Capture"



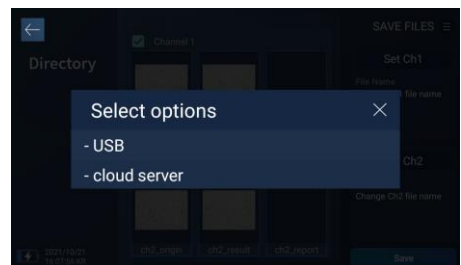
5. Click "Save Files" button to save it, after checking the result in "Result"



6. Click "Save" button, after selecting the result group you want to save or checking "File Name"



7. Select a storage option



Note : When opening a cartridge tray and pipetting a sample into the cartridge, put the cartridge on a clean table to prevent contamination of the cartridge surface in contact with the Bio Sensor, and be careful not to leave fingerprints.

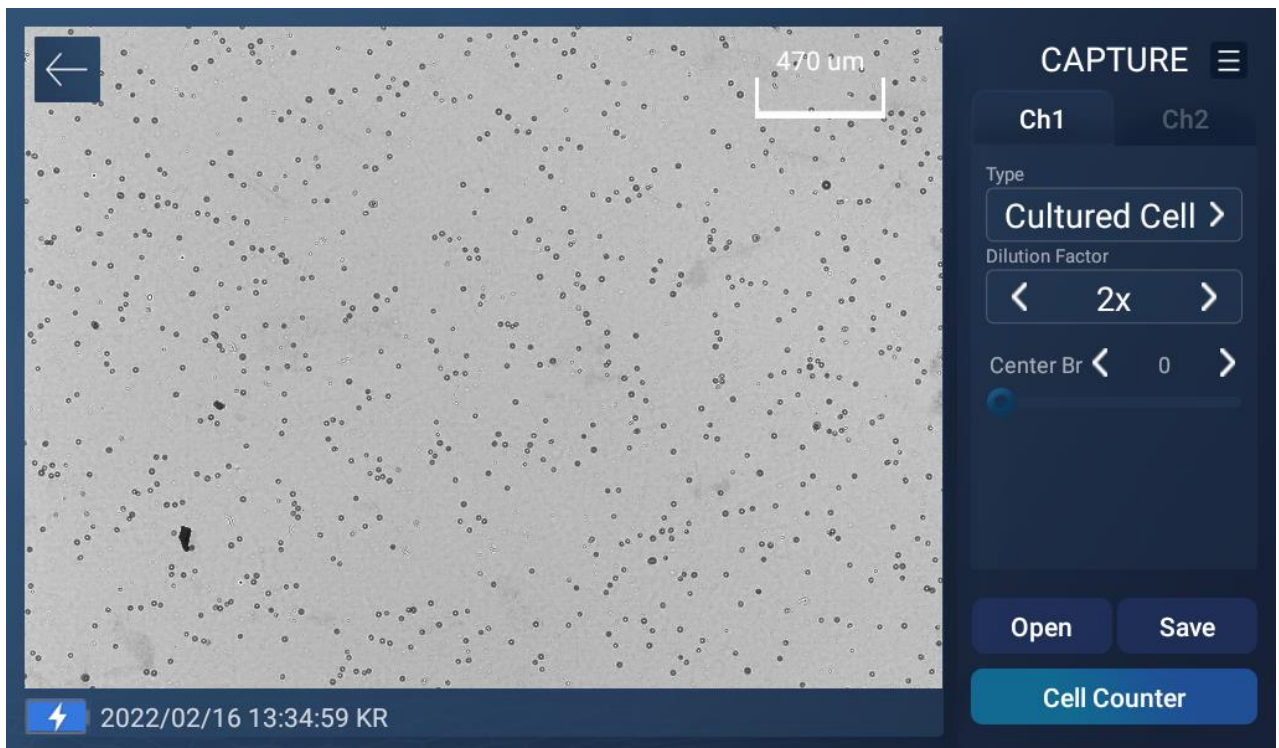
SOL COUNT is an Automated Cell Counter of using a lens-free biosensor based a semiconductor that quickly and accurately measures or counts the total number of cells, including cells and dead cells, and easily stores and transmits data. It could also measure and count two types of cells at the same time.

SOL Cartridge is a disposable that has 4 chambers that are easier to use and more cost-effective than competitor's one.

- ❖ Center Brightness Parameter is a convenience option that can get accurate results by adjusting to the user's experiment when the Viability is came out with a higher than expected results.

- How to Use

1. Check that the Viability is higher than expected.
2. The Center Brightness Parameter results on the Capture screen can be adjusted according to the user's experiment.
 - ✓ Note: Default is set up to 0.
 - ✓ Note: The adjusted parameter results will keep continuously applied.



3. Click "Cell Counter" button.
4. Check "Result".